

## SAVE TIME AND MONEY WITH THE GRAD® SYSTEM

One of the fastest ways to build durable decks, docks, rooftop decks, pontoons and more!

No need to install one clip at a time! What you see is what you get: the clips are already fastened on the aluminum rails. Use for temporary or permanent applications.

- Boards are simply snapped into place
- Same perfection and high level of details from beginning to end
- No pre-drilling, checking board alignment or gaps
- Boards can be removed to access the subdeck
- No contact between boards and joists
- Highly resistant to corrosion, insects and rot
- Aluminum rails are non-combustible
- Pedestals tested to ASTM D635 and D1929



100% RECYCLABLE



UP TO 10X FEWER SCREWS & CLIPS



UP TO 20 YEAR WARRANTY



100% HIDDEN FASTENER SYSTEM



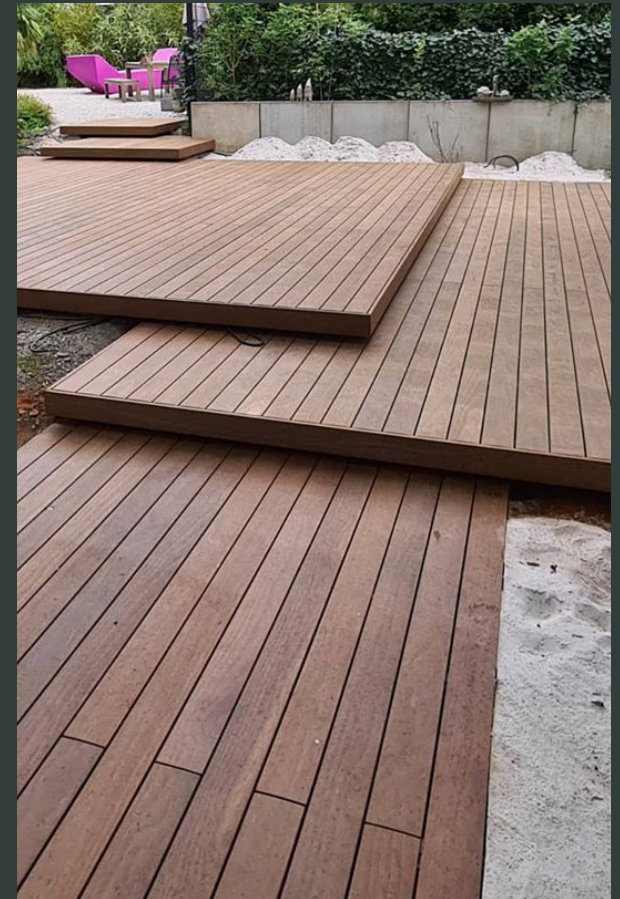
LIGHT & EASY TO SHIP



COMPLETE PROJECTS 2X FASTER

  
grad®

**THE PATENTED CLIP-ON SYSTEM FOR DECKING**



### GET IN TOUCH



[www.ohc.net](http://www.ohc.net)



[sales@ohc.net](mailto:sales@ohc.net)



800.999.7616



@overseashardwoodsco



@overseas-hardwoods-company



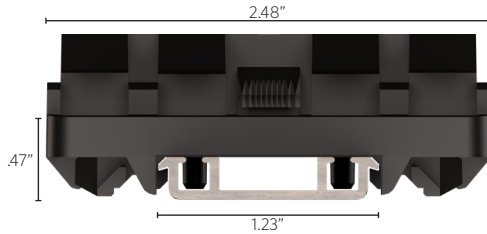
Distributed by:  
Overseas Hardwoods Company



# NON-STRUCTURAL RAILS

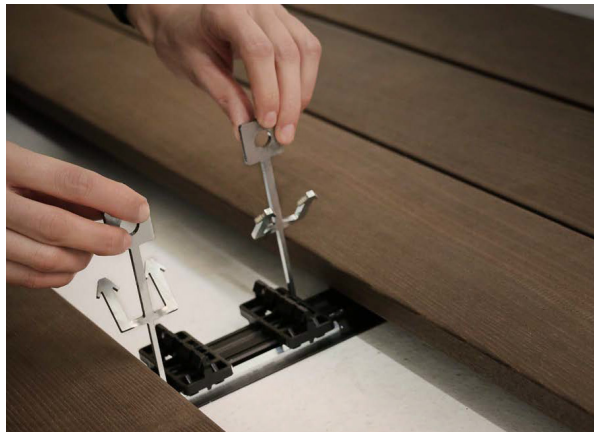
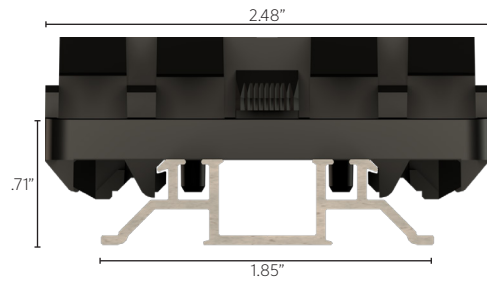
## MINI RAIL

*Compact and versatile*



## START RAIL

*Allows for board removal*



## USE GRAD® WITH:

Modified Wood  
Bamboo  
Hardwood  
Composite Material  
Aluminum

OHC has the capabilities to custom manufacture any of our lumber species to fit the Grad® rails.

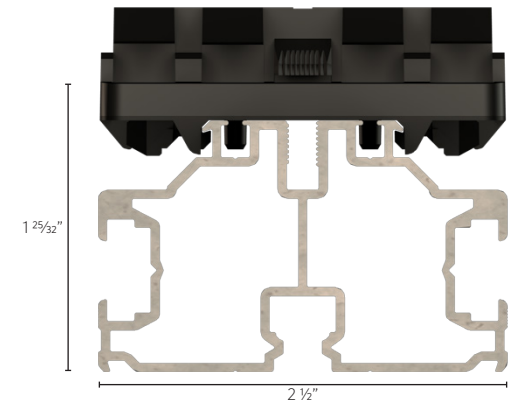
*\* Always follow installation guidelines and local, state, federal building codes.  
\* Check our board compatibility chart*



# STRUCTURAL RAILS

## PR39 & PEDESTAL

*Strong and durable*



*Rails are made of aluminum.  
Pedestals and clips made of polyoxymethylene.*